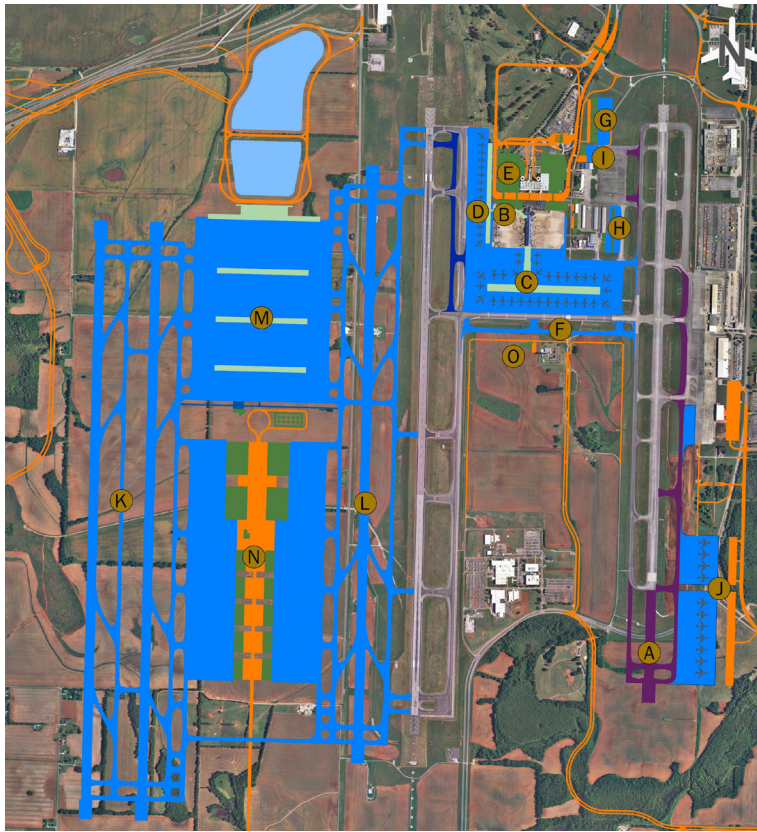




HUNTSVILLE INTERNATIONAL AIRPORT

In 1964, some 3,000 acres were purchased on the outskirts of Madison County and construction began on a new modern airport facility. Today, the Huntsville International Airport is over 8,000 acres and provides state-of-the-art facilities with the latest in amenities and services. Current facilities at Huntsville International Airport include two parallel runways - one 12,600 feet, which is the second-longest runway in the Southeast U.S., and one 10,000 feet - with a 5,000-foot separation that allows for simultaneous takeoffs and landings. Instrument Landing Systems (ILS) are located on all four approaches. Full general aviation services are offered by the fixed base operator, Signature Flight Support. The Airport provides 57 general aviation hangars, five corporate hangars, and 24 T-hangars on-site for aircraft storage. Huntsville International Airport, together with the International Intermodal Center, has clearly established itself as an important international air cargo gateway handling the only scheduled international flights in the State of Alabama.

Huntsville International Airport	Current	Future Capacity
Passenger Enplanements	725,484	968,123
Cargo (Pounds)	195,455,042	927,433,995
Aircraft Operations	70,816	83,456



HUNTSVILLE INTERNATIONAL AIRPORT PLAN

- A Future 2,000-foot extension of Runway 18L-36R
- B Future terminal expansion
- C Future concourse expansion south
- D Future concourse expansion west
- E Future parking garage expansion
- F Future Taxiway M
- G Future additional corporate hangars
- H Future additional general aviation hangars
- I Future 2nd fixed base operator
- J Future air cargo facilities
- K Future 3rd & 4th parallel runway systems
- L Future 5th parallel runway system west of Runway 18R-36R
- M "Ultimate" midfield west concourse/terminal
- N "Ultimate" maintenance, repair and overhaul/air cargo facilities
- O Future aircraft rescue and firefighting station

PORT OF HUNTSVILLE FEATURES:

- Strategic Southeast Location
- Foreign Trade Zone No. 83
- US Customs and USDA On-site
- Freight Forwarders/Custom Brokers On-site
- International Non-stop Air Cargo service to Europe, Asia and South America



HUNTSVILLE INTERNATIONAL AIRPORT  
INTERNATIONAL INTERMODAL CENTER  
JETPLEX INDUSTRIAL PARK

Box 20008 | 1000 Glen Hearn Boulevard | Huntsville, AL 35824  
TEL 256.772.9395 | FAX 256.772.0305

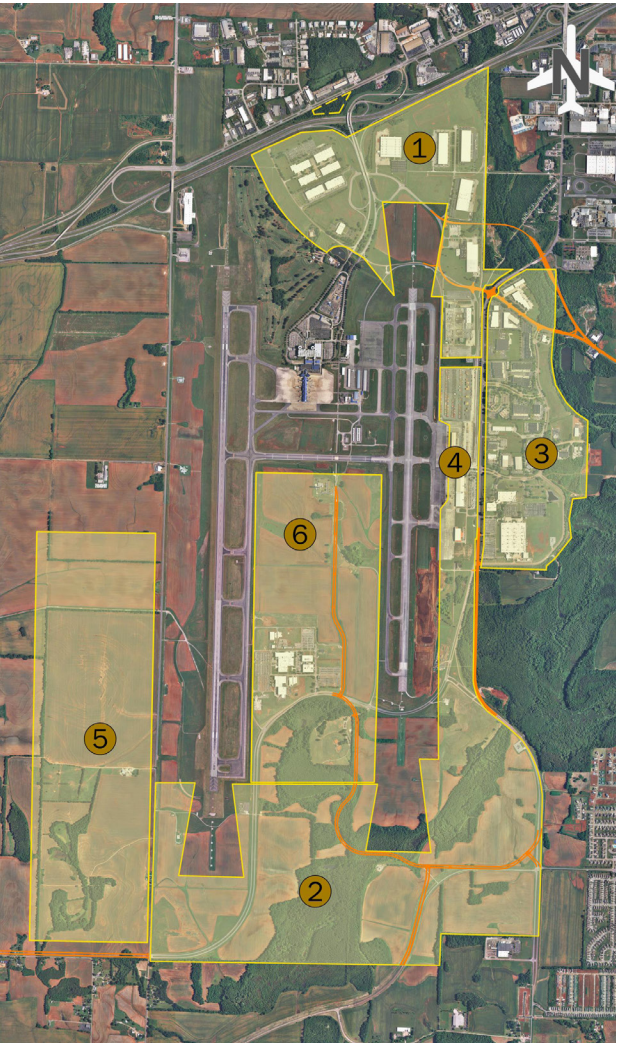


EXECUTIVE SUMMARY

The Huntsville-Madison County Airport Authority authorized a comprehensive airport master plan study for the Huntsville International Airport including the International Intermodal Center and Jetplex Industrial Park. This study was conducted to analyze the current facilities, infrastructure, land needs, equipment and operating procedures, as well as to forecast transportation and economic development trends in order to develop a long-range plan for the expansion at the Port of Huntsville.

JETPLEX INDUSTRIAL PARK

The Jetplex Industrial Park complements the Port of Huntsville complex with its existing global logistics infrastructure, presence of Foreign Trade Zone No. 83, high quality work force and direct access to a comprehensive multi-modal transportation network. The convenient location of the park, Huntsville International Airport, and the International Intermodal Center offers commerce and industry the comprehensive tools necessary in today's global economy. There are currently 4,000 acres in the Jetplex Industrial Park.



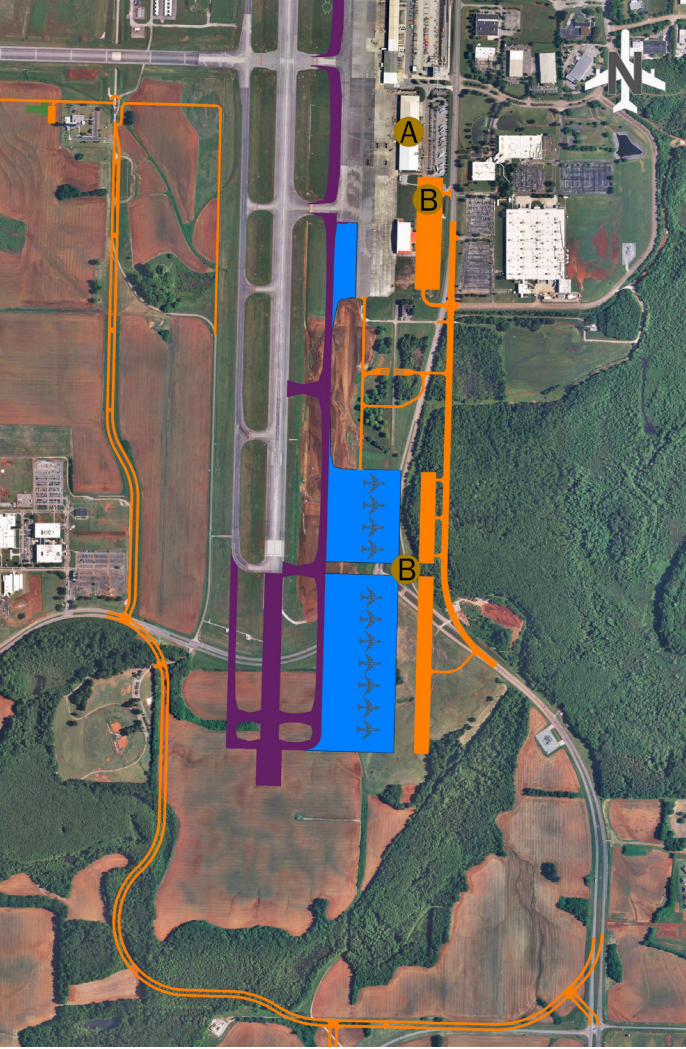
JETPLEX INDUSTRIAL PARK PLAN

- 1 Jetplex North for light manufacturing, warehousing and distribution
- 2 Jetplex South for light manufacturing, warehousing, logistics and distribution
- 3 Jetplex Supplier Park for light manufacturing, warehousing, and distribution
- 4 Jetplex Aviation Center East/Air Cargo for International Intermodal Center with runway access for maintenance, repair, overhaul, air cargo and aviation aerospace manufacturing
- 5 Jetplex Aviation Center West with runway access for maintenance, repair, overhaul, air cargo, logistics and aviation aerospace manufacturing
- 6 Jetplex Aviation Center Central for aviation aerospace manufacturing



THE INTERNATIONAL  
INTERMODAL CENTER

The International Intermodal Center is an inland port providing at one central hub location receiving, transferring, storing, and distributing services for air, rail and highway cargo for domestic and international purposes. In order to serve the needs of business and commerce, the Port of Huntsville must provide vital infrastructure. Therefore, a master plan has been created that will strategically position the Port of Huntsville to accommodate potential long-range demand.



INTERNATIONAL INTERMODAL CENTER PLAN

- A Existing air cargo facilities
- B Future air cargo facilities expansion

AIR CARGO

HSV ranks as the 17th largest international air cargo airport in the continental United States with its strategically located international air cargo gateway. HSV currently owns three air cargo buildings totaling close to 300,000 sq. ft. of warehouse and office space adjacent to 2.1 million sq. ft. of ramp area. HSV constructed an 18,750 sq. ft. perishables facility. Combined with two existing cold storage units of 5,250 sq. ft. and 11,000 sq. ft. - HSV now has 35,000 sq. ft. of cold storage space. This high-tech air cargo market is served by domestic and international all-cargo carriers. Weekly international nonstop service is available to Europe, Hong Kong, Brazil and other Asian destinations.



Facilities	Current	Future Capacity
Building	215,000 SF	800,000 SF
Apron	1,658,390 SF	4,400,000 SF

RAIL CARGO

The Intermodal Center rail terminal is served by Norfolk Southern, with dedicated stacktrain service to/from both east coast and west coast ports. US Customs and Border Protection inspectors, US Department of Agriculture inspectors, freight forwarders and customs brokers are all located on site. Rail cargo facilities include parking for 1,500 units, stacking capability (over 500 loads), one 45-ton rail-mounted gantry crane, one 40-ton rubber-tired crane, and the capability to support bottom and top lift, including wide top-pick.



Facilities	Current	Future Capacity
Rail Lifts	31,000	85,000
Container Storage	1,500	2,100



- C Existing Rail Yard
- +++ Existing Railroad Facilities
- +++ Future Railroad Facilities

